



# 17 Great Charta Close, Englefield Green, TW20 0GL

Aspen Estate Agents are delighted to introduce this stunning second floor apartment, on the exclusive Great Charta Close Development, built just 8 years ago and set in a wonderful location off prestigious Coopers Hill Lane, an easy walk to the village green and tennis club.

It has a video entry-phone system with either stairs or a lift leading to the second floor; here there is a front door leading to the well arranged accommodation comprising an entrance hall with large storage/linen cupboard, a big double aspect living room with space for a dining table and with plenty of windows, it lets in lots of light.

There is a good sized and beautifully fitted kitchen with built in and integrated appliances, including a dishwasher, washer/dryer oven, hob and extractor hood. The double bedroom is a superb size, with fitted wardrobes and there is a well appointed large bathroom, with shower over bath.

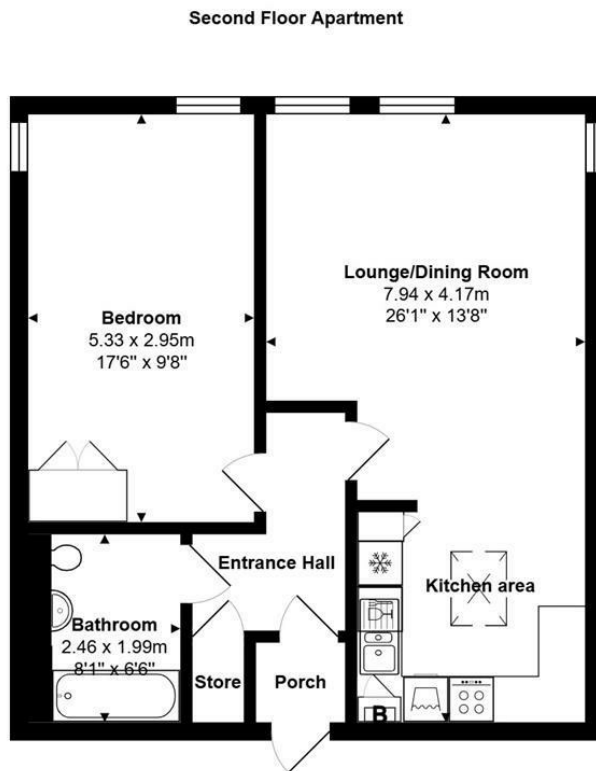
The windows are double glazed and there is a gas central heating system to radiators. There is further storage available in the loft and there is an allocated car parking space and a large communal bike store.

This property will make an amazing first time buy, equally would suit a 'downsizer' or investment buyer and the Energy Rating of 'B' will of course be beneficial. We cannot express enough what a wonderful location this is!

Please telephone ASAP to arrange a viewing!



# Floor Plan



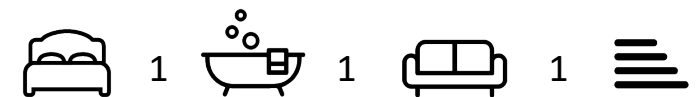
Total Area: 57.8 m<sup>2</sup> ... 623 ft<sup>2</sup>



## Features

- Big Top Floor Luxury Flat
- Video Entryphone
- Entrance Hall
- Fully Fitted Kitchen
- Gas Central Heating
- Wonderful Location
- Reached by Lift or Stairs
- Lounge/Dining Room
- Big Double Bedroom
- Double Glazing & Parking

10 St Judes Road, Englefield Green, Surrey TW20 0BY  
 Tel 01784 433696  
 sales@aspenestateagents.co.uk



Tenure - Leasehold Council Tax Band - C

